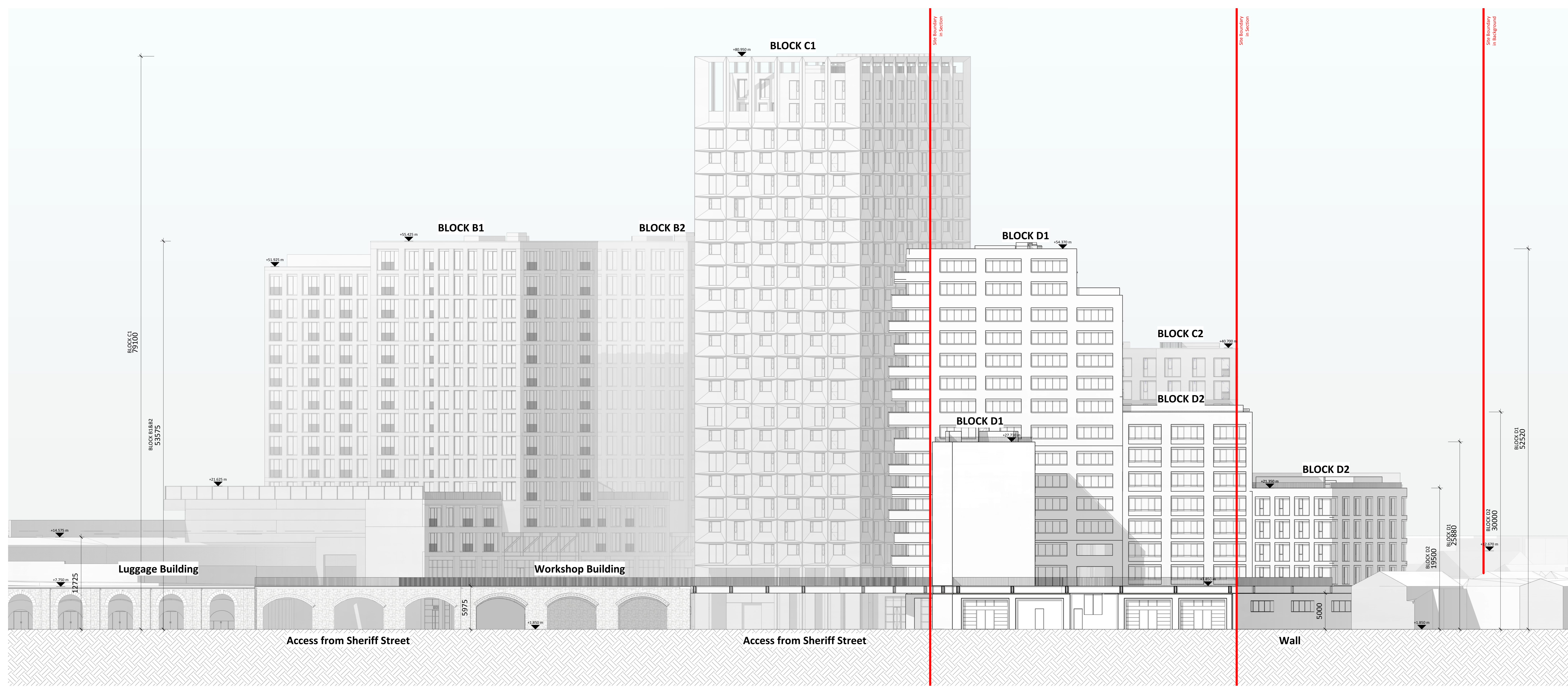
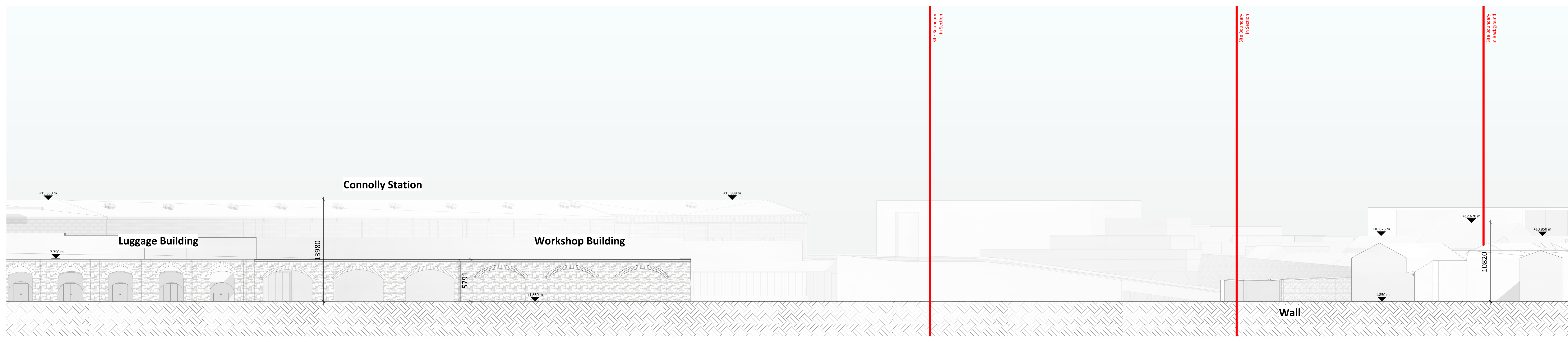


Notes:
 All levels shown are to the Irish Transverse Measuror (T.M.) and are displayed in meters (m).
 All levels shown relate to the Mean Head datum.
 All dimensions shown in millimeters (mm).
 Symbols indicate top of floor level and relates to Mean Head datum.



1 Sheriff Street Elevation - Proposed
 1 : 200



3 Sheriff Street Elevation - Existing
 1 : 200

| Rev. | Date | Description |
|------|----------|--|
| A | OCT 2019 | Issued for Planning Application Submission |

STATUS: **PLANNING**
 PROJECT: The Connolly Quarter
 PROJECT: Lands to the Rear of Connolly Station, Dublin 1
 DRAW TITLE: SITE - SHERIFF STREET ELEVATION

DWG NO: 18135-ARROW-00-ZZ-DR-A-1322
 REV: A PROJECT NO: 18135 SCALE: 1:200

DATE: JUN 19 DRW: ILA CHK: UR

